

# Marking system FlyMarker® PRO





FLYMARKER®

Mark like a Professional

## FlyMarker® PRO – Version MOBIL

The handheld CNC marking system FlyMarker® PRO turns marking of bulky, heavy and stationary work pieces into child's play. Use the FlyMarker® PRO to mark fast and efficiently as part of a permanent process in production or as a stand-by during downtime or emergency. Almost any material can be marked – from plastic to hardened steel.

### 100% mobile use – no annoying cables

A powerful battery enables 100% mobility and self-sufficient use of the FlyMarker® PRO anywhere on your business premises. No electrical or pneumatic cables hamper the marking process.

The lightweight, compact and ergonomic design of the handheld marking system enables the marking of bulky, heavy, stationary and even inaccessible work pieces effortlessly.

### Durable, tamper-proof marking

The custom developed integrated marking magnet for the new FlyMarker® PRO enables very precise and deep marking. Depending on the material and customer requirements the marking force can be adjusted manually.

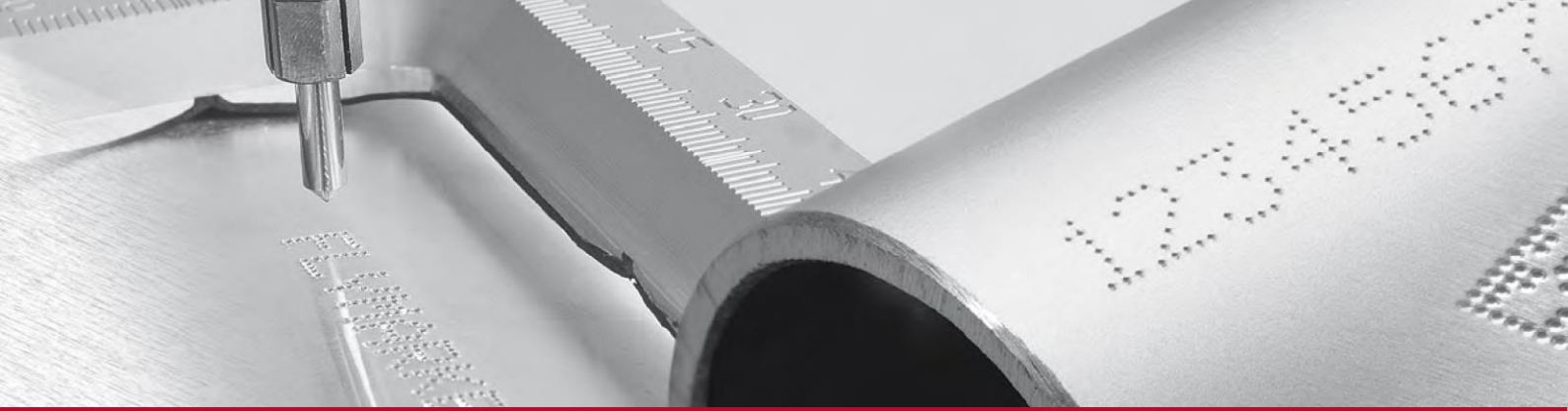
If for example a mark needs to be visible after a painting process, a deep marking is required.

### Automatic height compensation

The automatic height compensation of the marking system enables work pieces with uneven surfaces to be marked with a constant marking quality and depth.



...**PRO**fessional  
...**PRO**ductive  
...**PRO**fitable



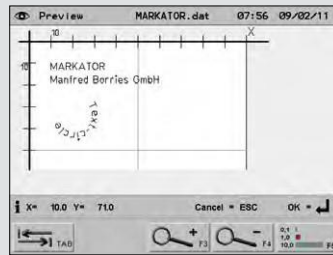
### Self-explanatory software

The FlyMarker<sup>®</sup> PRO software is clearly presented, well-structured and self-explanatory. Various helpful functions such as time, date and auto numbering are included in the standard scope of delivery.

Via the software preview function it is possible to visualize the created marking files on the integrated LC colour display before the actual marking process.



Main menu



Preview

### Data management

Several hundred marking files, fonts and logos can be saved and administered on the internal data storage of the FlyMarker<sup>®</sup> PRO.

The USB interfaces of the marking system allow a quick data backup of the marking files. Using the optional available PC software, it is possible to create the marking files directly on the PC and transfer them to the marking system afterwards.



### Large Colour LC Display

The CNC hand-held marking system FlyMarker<sup>®</sup> PRO features a large high resolution 320x240 pixels LC colour display. This display enables easy entry, modification and control of the marking files.



### Illuminated marking area

The illuminated marking area of the FlyMarker<sup>®</sup> PRO makes adjustment of the work piece to be marked very easy.



### Interfaces

For an easy data transfer there is an USB-A, an USB-B and an Ethernet interface available.



Version MOBIL

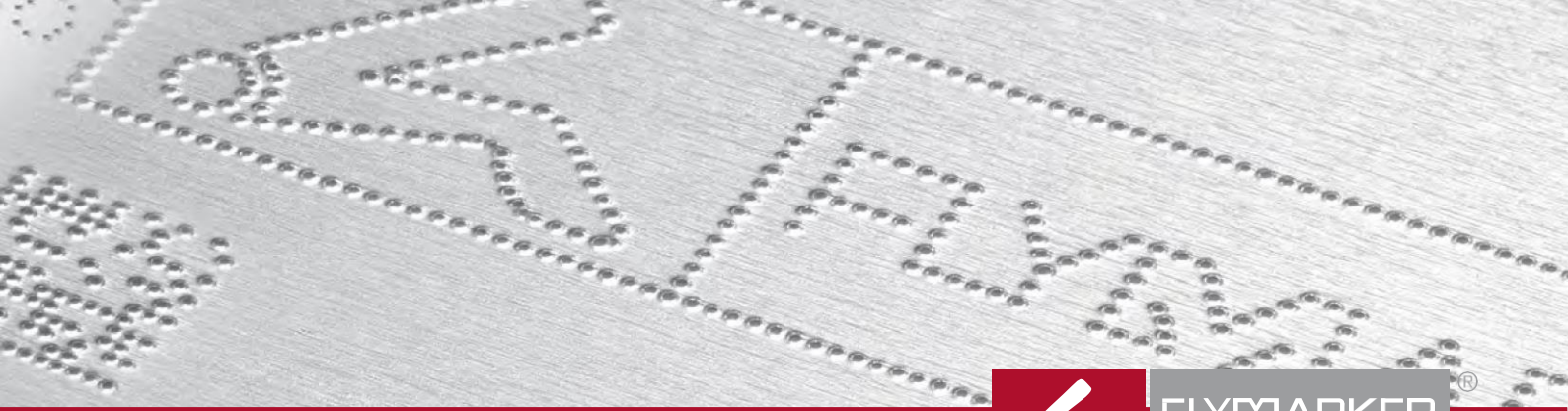


Version STATION



### Carrying case

For easy transportation, the mobile version of the hand-held marking system will be delivered in a hard protective carrying case. The complete marking system, batteries and the charging station can be stored safely in this case.



## FlyMarker<sup>®</sup> PRO – Functionality

The compact hand-held marking system features easy handling and can be used without any programmer knowledge:

### Switch on – Type in – Mark

The FlyMarker<sup>®</sup> PRO is the perfect machine for the workshop producing durable, fast, flexible marking with a low noise level. The marking is made by well-structured single dot characters. Depending on the type of application it is possible to choose between 5 x 7 or 9 x 13 sizes. It is also possible to mark Data Matrix Codes.

### Mark Data Matrix Codes

The Data Matrix Code function (optional) enables a large amount of information to be marked within a limited space. The data can either be type in via the FlyMarker<sup>®</sup> PRO key-board or transfer via the marking systems USB interface.

### high Marking Quality

The high quality linear x- and y- direction guides are double guided to provide the FlyMarker<sup>®</sup> PRO with a very stable and durable mechanism.

With the addition of further quality components MARKATOR<sup>®</sup> have engineered extremely precise warp-free high quality marking.

### Short marking times

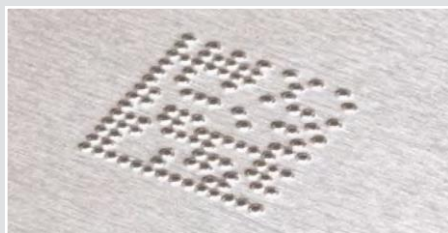
Use of the latest control technologies allows quick and easy navigation with fast access times. The FlyMarker<sup>®</sup> PRO is equipped with strong motors which are capable of producing short marking times.



5 x 7 font



9 x 13 font



Data Matrix Code (optional)



Logo marking (optional)

### TeChnICAL DATA

**Marking area (x/y)**  
75 x 25 mm, 120 x 25 mm,  
75 x 45 mm or 120 x 45 mm

**Available character heights**  
1,0 to 24,9 mm or 1,0 to 44,9 mm

**Fonts**  
Medium spaced lettering similar to DIN 1451  
in single dot characters (size 5x7 or 9x13)

**Drive of the marking pin**  
Electromagnetic

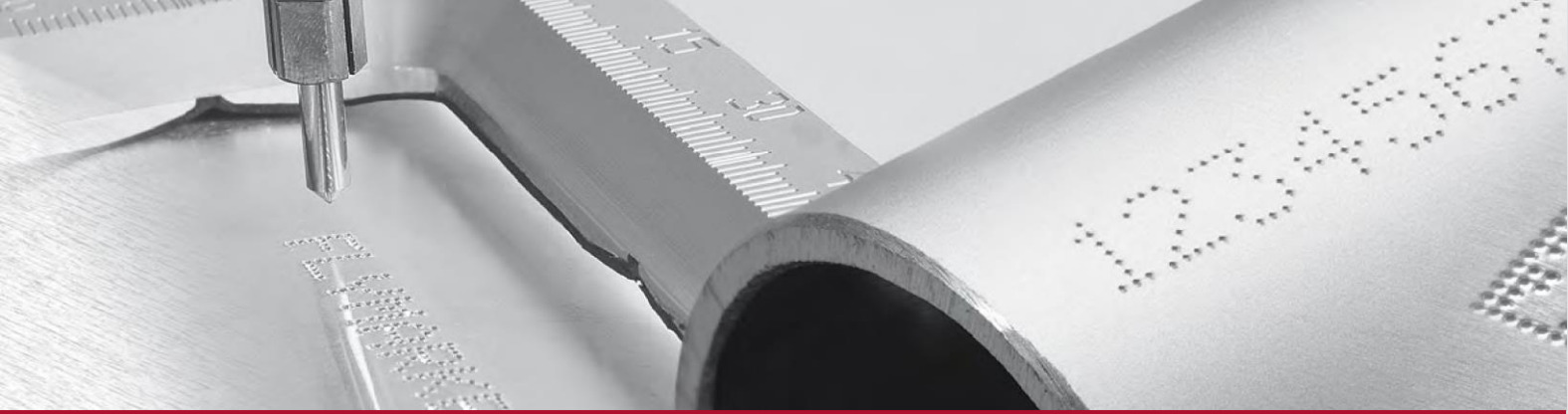
**Available characters**  
Figures 0 - 9  
Capital letters A - Z  
Small letters a-z  
Various punctuation marks  
e.g. . ; / , etc.

**Interfaces**  
USB-A, USB-B, Ethernet

**height compensation**  
up to max. 5 mm (constant marking  
depth also on uneven surfaces)

**Weight**  
10 LBS

**Resolution of the stepping motors**  
0,05 mm



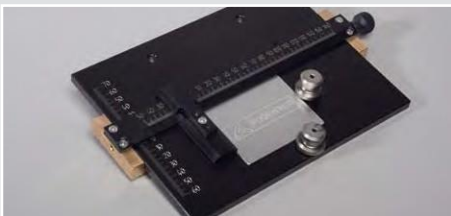
## FlyMarker® PRO – The options



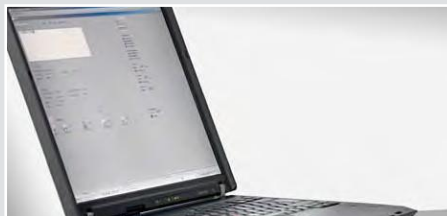
1



2



3



4

### 1 Additional, extra strong magnet

The extra strong magnet offers more power for very deep markings if for example the marking needs to be coated afterwards.

Picture from left to right: Marking on steel (St 37), sandblasted marking, sandblasted and coated marking.

### 3 Flexible name plate support

The position of the plate can be moved in both x and y directions. Magnetic clamps are used to fix plates of different sizes in position.

### 2 USB-Barcodescanner

For fast and simple reading of barcodes directly into the marking system. Plug & Play via the USB-A interface of the FlyMarker® PRO.

### 4 PC-Software Fly XL CONTROL

PC software to create and save marking files directly onto your PC/Laptop. Transfer of the required marking files to the FlyMarker® PRO. Including a preview of the marking!

## YOUR LOCAL PARTNER:

**EDM TECH CENTER INC.  
8479 XERXES AVE N  
BROOKLYN PARK MN 55444-1468  
USA**

**[P] 763-315-9104**  
**[www.edmtechcenter.com](http://www.edmtechcenter.com)**



## **MARKATOR®**

Bunsenstraße 15  
71642 Ludwigsburg  
Germany

Telefon +49 (0) 7144 - 8575 - 0  
Telefax +49 (0) 7144 - 8575 - 600

[info@markator.de](mailto:info@markator.de)  
[www.markator.de](http://www.markator.de)

