

**FIBER LASER MARKING. ANYWHERE.**

# MobiLase

The Industrial Fiber Laser Marker In A Suitcase

**110V & Battery-Powered  
Versions Now Available!**



**STEEL** ✨  
**COPPER** ✨  
**ALUMINUM** ✨  
**ZINC** ✨  
**ALLOYS** ✨  
**RARE METALS** ✨  
**PLASTICS** ✨  
**APPLIANCES** ✨  
**BRASS** ✨  
**FOOD PACKAGING** ✨  
**TOOLING** ✨  
**MEDICAL EQUIPMENT** ✨  
**CONSTRUCTION MATERIALS** ✨  
**MANY MORE!** ✨

## **ALL-IN-ONE LASER MARKING**

Introducing the all-in-one fiber laser marking unit housed in a 45-lb. suitcase. While laser marking units are typically large, heavy, stationary machines, the lightweight MobiLase® opens up a world of possibilities for industrial strength laser marking to be completed anywhere. With both MobiLase® and MobiLase® Battery, a battery-operated version, you can bring laser marking directly to your parts instead of lugging them to a laser marking station.

## **UNRIVALED PORTABILITY**

Fully mobile 45-lb rolling suitcase;  
battery-operated version option

## **INDUSTRIAL STRENGTH**

Powerful, 30-watt fiber laser

## **VERSATILITY**

Nearly any type and size of material

## **ALL-IN-ONE**

User-friendly software on embedded  
touchscreen PC

## **HIGH QUALITY / LOW COST**

Up to 100,000-hour laser lifetime  
for ~\$10K

**ROCKLINMFG.COM**

# SPECIFICATIONS

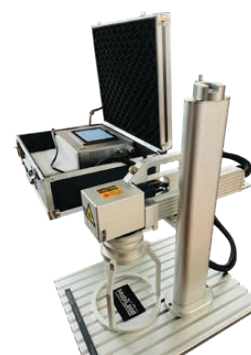
Laser Source	Fiber laser
Power Output	30W
Standard Marking Area	100 mm x 100 mm
Entire Unit Weight	~45 lbs.
Laser Handle Weight	~7 lbs.
Marking Speed	≤7000 mm/s
Repeated Precision	0.01 mm
Wavelength	1064±10 nm
Frequency Of Pulse	20-80 KHZ
Marking Depth	≤0.25 mm
Minimum Line Width	0.03 mm
Minimum Line Characters	0.2 mm
Power Supply	AC110V±10% 60Hz (MobiLase®) Lithium-Ion (MobiLase® Battery)
Cooling	Air cooling
Operation Temperature	10-35°C
Laser Generator Life	Up to 100,000 hours
Software	Integrated Touch Screen



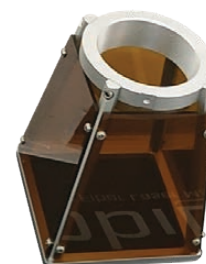
45-lb. all-in-one rolling suitcase



Two handheld bracket options included



Optional laser stand for tabletop marking conversion



Optional laser shield accessory